

## 1.09. Insulin, Diabetes and SvetL Programs

Author: Shkrudnev F.D.

### Introduction.

The presented material allows us to consider the issues related to understanding what diabetes is from a different point of view, and on this example to continue the knowledge of the application of the "SvetL" Programs.



You can believe it or not, but many people are beginning to think more and more recently that most of the former basic constants and dogmas developed over the past 500 years in medicine, science, as well as in religious positioning associated with "healing" from the "incurable" (God's punishment) and other "knowledge" - they crumble to dust, and "new guesses" are not always presented intelligently and meaningfully, more often taking inquisitive minds into an esoteric worldview, demonism, cosmopolitanism, and so on, forming an even greater inaccessibility to the truth, bringing such unstable knowledge to a state of complete apophaticity relative to it. And it is easier to say - to hopelessness and complete disbelief in the same medical science, the tablet invented by her and "the latest research" (with the latest techniques, equipment, technologies, etc., etc.).

However, this information will allow You, if you read it carefully, to advance in Your Knowledge about yourself and "what is happening inside" You, as well as in the Knowledge of the capabilities of "SvetL" Programs regarding diabetes and not only.

\* \* \*

Insulin is one of the most important components used in the production of glucose. It is the fact that insulin is just one of the components that makes us remember what glucose is and what it is intended for, and at the same time - what is "diabetes", "hemophilia", and what are the functions of the brain when receiving glucose.

**1. Diabetes mellitus and hemophilia.** It is generally accepted that an increase in blood sugar is a sign of diabetes, a low content - hemophilia. In this case, there is a violation of metabolic processes in the body, functional changes in the organs. The human psyche and behavior change. First of all, the lymph system suffers. The table shows the main signs that accompany a person, both with diabetes and with hemophilia. Note that diabetes and hemophilia cannot be treated by modern medicine, and there is an increase in the number of patients. They look for reasons **in nutrition, ecology, social structure, etc.**

**Feature table**

N	Наименование	Сахарный диабет	Гемофилия
1	Изменения кожи	Рыхлая кожа	Прозрачная кожа
2	Цвет под выходом ногтя	Темный	Очень светлый
3	Спазмы конечностей рук или ног	Нет	Да, во сне
4	Зрачки глаз	Сужены до 140 %	Расширены до 160 %
5	Координация движений	Замедлена	Ускорена
6	Переход из одного психологического состояния в другое	Замедлен	Ускорен (минимум до 0.1 сек)
7	Сворачиваемость крови	> 148 %	< 24 %

8	Продукты	Крупы (гречка, и т.п.)	Только овощи
9	Газы, запоры	Запоры	Газы
10	<b>Цвет кожи</b>	<b>Желтый</b> - Са Нет	<b>Белый</b>
11	Цвет волос, густота волос ( - ) - отсутствие ионов	волос -Mg Густая на теле Не глубокий, часто прерывается	- Са Белый - Mg Рыжий  Глубокий и очень короткий Очень высокая, но не результативная
12	Сон		
13	Работоспособность умственная	Невысокая	
14	Работоспособность физическая	Невысокая Больше нормы	Отсутствует
15	Для женщин - наличие грудей Магнитный импульс на 32	(норма 2 - 3)	< 2 или вообще нет
16	окт.	18 - 56 %	116 - 184 %
17	Электрический потенц. На 32 окт.	124 - 196 %	18 - 48 %
18	Гравитационный потенц. на 32 Электрогравитационный потенц.	148 - 384 %	18 - 72 %
19	на 38.5 октаве	248 - 484 %	36 - 84 %

N/N - Наименование/Name - Сахарный диабет/Diabetes mellitus – Гемофилия/Hemophilia

1 Изменения кожи/Skin changes - Рыхлая кожа/Loose skin - Прозрачная кожа/Transparent skin

2 Цвет под выходом ногтя/Color under exit of nail – Темный/Dark - Очень светлый/Very light

3 Спазмы конечностей рук/Spasms of limbs or arms or legs - или ног/No Yes - Нет Да, во сне/During sleep

- 4 Зрачки глаз/Pupils of eyes - Сужены до 140%/Narrowed up to 140% - Расширены до 160%/Expanded up to 160%
- 5 Координация движений/Coordination of movements – Замедлена/Slowed down - Ускорена/Accelerated
- 6 Переход из одного психологического состояния в другое/Transition from one psychological state to another - Замедлен/Slowed Down - Ускорен (минимум до 0.1 сек)/Accelerated (up to 0.1 sec minimum)
- 7 Сворачиваемость крови/Blood clotting - > 148% < 24 %
- 8 Продукты/Products - Крупы (гречка, и т.п.)/Cereals (buckwheat, etc.) - Только овощи/Only vegetables
- 9 Газы, запоры/Gasses, constipation – Запоры/Constipation –Газы/ Gasses
- 10 Цвет кожи/Skin color – Желтый/White - Белый/Yellow
- 11Цвет волос, густота волос ( - ) - отсутствие ионов /Hair color, hair density (-) - no ions - Ca Нет волос-Mg Густая на теле/- Ca No hair-Mg Thick on the body - Ca Белый - Mg Рыжий/- Ca White - Mg Red
- 12 Сон/Sleep - Не глубокий, часто прерывается/Not deep, often interrupted - Глубокий и очень короткий/Deep and very short
- 13 Работоспособность умственная/Mental performance – Невысокая/Low - Очень высокая, но не результативная/Very high, but not effective
- 14 Работоспособность физическая/Physical performance – Невысокая/Low – Отсутствует/No
- 15 Для женщин - наличие груди/For women - having breasts - Больше нормы (норма 2 - 3)/More than normal (norm 2 - 3) - < 2 или вообще нет/<2 or not at all
- 16 Магнитный импульс на 32 окт./Electrical potential on Octave 32. - 18-56% - 116-184%
- 17 Электрический потенц. на 32 окт./Electrical potential on Octave 32. - 124-196% - 18-48%
- 18 Гравитационный потенц. на 32/Gravitational potential by 32 - 148-384% - 18-72%
- 19 Электрогравитационный потенц. на 38.5 октаве/Electrogravitational potential on 38.5 octave - 248-484% - 36-84%

## 2. What is “sugar”?



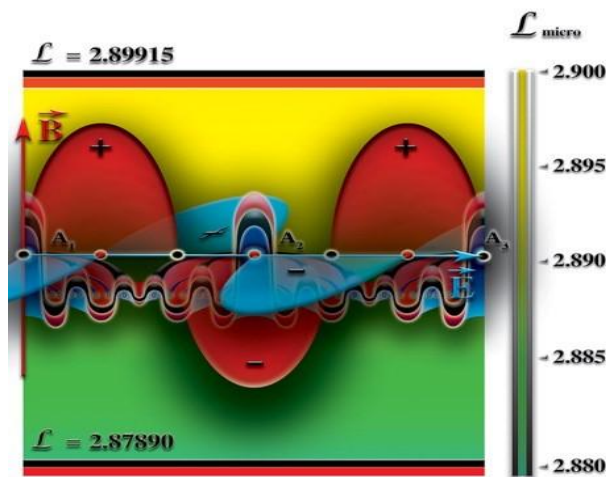
**2.1.** This section will begin with a “terrible opening”: **there is no concept of “blood sugar”**. It is no secret that modern medicine works only with inanimate structures. Only experiments are performed on living structures.

Let's explain **that each cell of the body is controlled by the brain**, the control system is not known to modern medicine. In addition, the structure of the living cell itself is not known. Microscopic studies are studies of an inanimate structure (without connection to the control system), so all recommendations relate only to dead structures.

In addition, the brain itself generates sensations, on the basis of which the instrument part for low-level research is built, and if the brain has changed the formation of sensations for some reason, this does not mean that the external world has also changed. A number of publications have already mentioned that the movement of blood through the vessels resembles the movement of metal ions under the action of an external (solenoid) electro-magnetic field, while the source of this field is not specified. At least the first tentative step towards the truth has already been taken.

**Before moving on to blood sugar, let's note the main dependencies for a living organism.**

### 3. Basic concepts



**3.1. A Person is a structure that is simultaneously located in two spaces - in the neutron (proton) and antineutron (electronic) spaces. All sensations are formed only for neutron space.** Other connections of the brain (with neutrino space) are not considered here.



**3.2. The entire development of life on Earth is determined by frequency dependencies formed by the difference between two numbers of the Solar system.** No living organisms of other systems can exist on Earth without their own gravito-magneto-electric generator.

**3.3. The Foundation of any living structure is hydrogen** and the formation of ions subjected to the same difference in numbers. So, for example, a person formed in the Alpha Centauri system, when delivered to Earth and tied to an existing life support system, may look like a crocodile.



If an object (or as it is called, a dish) created in another system **does not provide a restructuring of its structure to the values of the constants of the system** it invades, **it automatically undergoes transmutation with the formation of an inert mass.**

**3.4. The Main structure of a living cell is Nitrogen** (if you follow the names of the periodic table), or the 4th structure of hydrogen conversion. As you know, hydrogen has 512 atoms -  $64 * 8$ . Based on the division into 8 spaces and the fact that the structure of hydrogen is a single whole, in the neutron space we have ions of inert structures (base - 64, total number 1032). The nitrogen series are hydrogen structures H19, H21, H23, H25, H27, H29, and H31. Replacing with nitrogen, we get A19, A21, A23, A25, A29, and A31. **Each structure is a specific gravitational frequency and electrical potential.** The connection between the blocks is magnetic pulses that have their own potential and frequency. The frequency range of magnetic pulses for a living cell (communication with neutron space) is 4 - 84 octaves; the next buffer has a range of 54 - 96 octaves. SvetL Programs configured for a specific individual are able to support this range.

**3.5. The basis of sugar is a nitrogen block.** This is the most easily synthesized and, consequently, decayed compound that carries all the necessary potentials in both neutron and antineutron structures.

**3.6.** The Main principle for the current state of the nitrogen block is that the **albedo of the entire block is zero**. What does this mean? The integral value of all acquired potentials, taking into account magnetic pulses, is equal to the integral value of all losses associated with the redistribution of potentials after synthesis.

**3.7. The most stable system is a neutron,** and any violation of any of the top structures entails the transmutation of nitrogen ions block the neutron structure, which violates the albedo, when it reaches a certain balance disappears magnetic pulse communication with the upper structure.

In this case, electric potentials and magnetic impulses are redistributed between the remaining structures.

However, with this redistribution, the reaction time in the atom changes and, consequently, the so-called lifetime of the nitrogen block decreases. Each violation of the albedo entails, among other things, the formation of heavy metal ions in the nitrogen block, or simple ions that cannot be bound by a magnetic pulse and are a ballast for the nitrogen block (coupling is only at gravitational frequencies). Violation of the balance of the number of nitrogen block atoms leads to an increase in the octave of the magnetic pulse with a decrease in its potential. Since the brain uses gravitational frequencies to communicate with the cell, getting additional frequencies is an indicator of how sensations are rearranged, followed by a rearrangement of sensations for all cells in neutron space, which changes the overall albedo of the body and, as a result, the reaction time of atoms. A kind of closed-loop chain reaction with feedback is observed, and such a chain reaction can no longer be stopped without breaking the magnetic pulses that bind the structures of nitrogen blocks in other spaces.

**3.8.** The Meaning of sugar synthesis for cells is the formation of an electric potential of a given gravitational frequency and the creation of a sufficiently complex structure for subsequent transmutation with blocks superposing the resulting potential. The structure type is defined by the status of atoms, type of organization and type matching constants of the Solar system.

The integral state of such a structure is called "sugar", that is, the SHR Union of hydrogen potentials on a gravitational basis. The carrier of this structure is the nitrogen block. The so-called time counter starts working from the moment of conversion of at least one atom of the nitrogen block (transition to a neutron structure).

For the synthesis of sugar, the sugar iron of the antineutron space is used. Without considering the synthesis process and its effect on the antineutron space, we will note only those aspects that may be required in the future.

#### 4. Energy features of the transformation of nitrogen blocks in neutron space.

The resulting ions of the corresponding structures with the specified parameters of gravitational frequencies, electric potentials, and the accompanying magnetic pulse make up the neutron part of the nitrogen carrier block SHR.

A table of the final SHR distribution is provided in the Appendix. Without specifying the actual distributions of potentials and frequencies, we assume the initial state of SHR to be 100 % - regardless of the genotype.

**The right kidney, which is the first "point" of the SHR translation, must have a sufficiently high gravitational potential provided by the lymph system.** Let the gravitational potential of the right kidney be 100 %, and the connection of the brain to the right kidney be 100 %. This is an ideal case for any genotype. But SHR is not an end in itself, in its pure form, the body does not need an electric potential - it is a poison, so the potential must be "Packed" in a container, **which is formed by the upper part of the liver.** With regard to the "transported cargo", the container must be able to "deliver" the cargo to the consumer, that is, to the cage, without breaking the tightness during transportation.

**Containers are made on a conveyor belt - the upper lobe of the liver.**



With 100 % connection to the brain, the conveyor has 0.48% of the potential of gravitational frequencies relative to the "load", and a magnetic pulse that should not coincide with the transported load. This is achieved by transmutation (or packing the cargo in a container).





Cargo - the initial gravitational potential (and there are tens of thousands of them) may not fit in the container, so any cargo is converted to a standard form (compressed, stretched, transformed, etc.). The Nitrogen block undergoes quite a lot of changes until the measuring mechanism (built on sensations) indicates that the block is ready to be loaded into the container. The functions of standardization are performed by the pancreas.

**Glucose output from it is the final type of cargo before it is Packed in a container and container, that is, a cargo-container pair.** Changing the shape of the initial block is due to the energy costs of the pipeline - the pancreas, and if these costs exceed the acceptable level, or the cost sensations exceed the sensations of the warehouse (right kidney), the pancreas overload mode occurs, in which there is no replenishment of costs, while the cells of the pancreas may lose connection with the brain and be turned off from the conveyor. SHR, which is not subject to standardization, is also sent to the assembly chamber along with standard blocks.

**The assembly chamber in the container is the heart, or rather, it's right atrium.**



**This is a kind of magnetron, where with a clock cycle of about 1 second the cargo is Packed in a container.** After packaging, the Assembly enters the left atrium and then goes to the address indicated on the "box".

**Each container is intended for a specific cell**, and no other cell in normal operation can "capture" someone else's container and, moreover, change the marking. The tact of transmutation (rolling cargo into a container) is determined by energy costs. After packaging, 96% of the container (with cargo) is transferred to the antineutron state, which ensures that the albedo is not violated.

**If this were not the case, the body temperature would be above 100 degrees.**

The remaining "garbage" enters the transport network and "walks" there until it gets analyzed for "sugar", posing as it. However, the amount of garbage can indicate violations in the overall system of energy supply of cells, but not the quantitative ratios.

Serious violations occur in the case of changes in the communication potentials of the SHR organization systems with the brain, which leads to an oscillatory process - the transition to one of the stable forms that accelerate the transmutation of ions in the neutron space - diabetes or hemophilia. Any of these forms has one property - a gradual change of sensations with the subsequent elimination of magnetic impulses that connect different spaces.

For humans, there are norms for the distribution of glucose:

Right-spiraled sugar is translated as an ionic structure in the amount of 125 grams per 108,000 grams of human weight. And this is not sugar, but glucose, the number of octaves of its state is 12, the lower 32 octave is 12.4%, the upper 94.625625 octave is 36%, the distribution by organs is as follows:

Наименование органа, потребляющего глюкозу для собственных нужд/Name of body consuming glucose for own needs	Количество грамм (на 108000 г веса)/amount in grams for 108.000g weight)
Сердце/Heart	12
Печень/Liver	16
Селезенка/Spleen	25
Мозг головной/Brain head	24
Спинной мозг/Spinal cord	10
Поджелудочная железа/Pancreas	7
Уриноцентр/Urino-center	3
Почки и надпочечники/Kidneys and adrenal glands	1
Легкие/Lungs	3

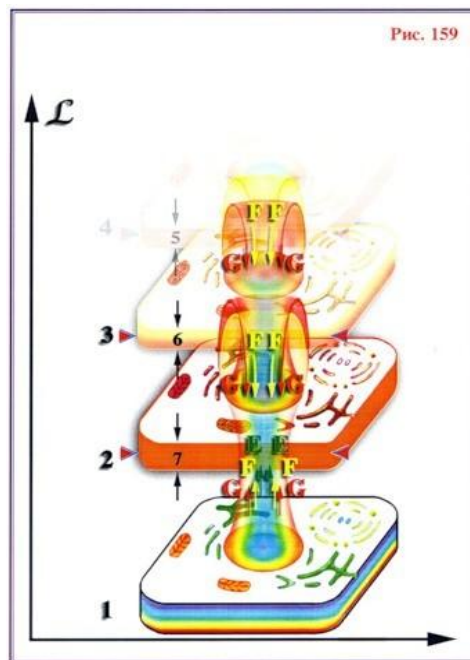
Половая система/Reproductive system	6
Щитовидная железа/Thyroid	12
Кишечник/Intestines	5

**Garbage can be thrown out of the blood plasma by cleaning**, while the number of containers will not change, since ion structures are thrown out, **and to release the container, you need to turn off the brain or control system.** (This provision of emission is actually handled by the SvetL Programs, which are involved in the recovery process).

### 5. Living cell and glucose.

A living human cell is not only its ionic state. And of course, the existence of a living cell does not depend on chemical reactions. Conventionally, a living cell can be divided **into three parts - the low-octave and high-octave output and the central part.**

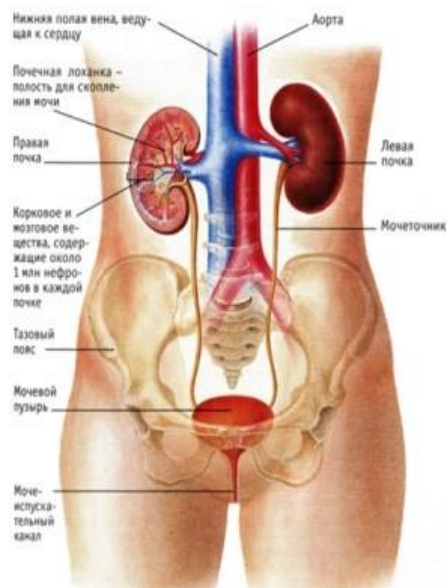
The Central part is a kind of "perpetual motion machine" with a given lifetime.



**The lifetime is set by the octave of the lymph sweep during the formation of the ion structure and by magnetic pulses with corresponding sliding angles.** The relationship between time and space in a living cell is determined by the sliding angle[1]. The values of this angle are from 21.6 to 43.5 and determine the lifetime from 0 to 32,000 years (on the Earth's time scale). The midpoint corresponds to 124 years of life.

Therefore, regardless of the disease of the individual using the SvetL Device, as part of the changes that are taking place today related to the operation of the Native Control System, SvetL Programs strive to bring the cell to the optimal point, close to perfection, and in some individuals, depending on the current state of the Brain - and further. **A perfect cell can be left to live for 32,000 years, but under the same external conditions.** The optimal point of 124 years corresponds to a cell that is close to perfection, but changes at the next mutation due to changes in external conditions. The albedo of a cell is always zero (that is, the midpoint), where the temperature is 36.60 in equine letters. Note that a living cell is a multi-stage (multi-octave) structure - from 32 (ionic) to 96 (neutrino) octaves. It makes no sense to compare energy capacities in different octaves - 1 charge equivalent of 52 octaves corresponds to approximately 10.000.000.000 charge equivalents of 32 octaves, that is, the ion structure has a minimum charge equivalent, and there are no devices for recording charge equivalents of high octaves. This confirms the impossibility to date, a certain "scientific evidence-based fixation" of the work of SvetL Programs, within the framework of all "devices created by modern science".

High octave potentials serve to maintain the gravitational frequencies of cell-brain communication. Each cell in violation of the albedo requires the brain to “recharge” or output excess potentials.



In this case, the brain forms a direct address delivery or connects channels for the output of excess potentials.



You don't need to explain how important it is to “have lunch” or “go to the toilet ” on time - if the regime is violated, albedo changes, midpoint shift, disorders in the communication system with the brain, etc. occur in a living cell. **Such cells either die off or become “vampires” in the environment of other cells.** At the same time, the “peaceful” life of the surrounding cells is disrupted. **For a detailed description of a living cell and the purpose of potential output systems, see A. Khatybov "Earth's Biosphere" and N. Levashov "Essence and Mind” vol. 1.**

#### **6. Brain connectivity and choice of catalyst type.**

**As indicated above, the brain, having received a signal from a living cell, either forms it to the delivery of the corresponding potentials (at the corresponding octaves), or frees the cell from excess potentials.**

There are only two possible situations: either the brain knows that there are violations in the cell, and in addition to the normal scheme, it connects additional reserves, or it does not know, and then the cell can get what it does not need, or vital potentials are withdrawn from it.

**Of the many structures that form glucose, medicine has identified one - insulin.**

**Insulin is a catalyst, but it only works in a living environment and its structure is formed by the brain.** If we isolate insulin and try to look at it, we will see dead matter with the remnants of potentials and magnetic impulses that survive in the absence of communication with the brain.

This is similar to the way they try to look at blood taken from a vein under a microscope - it has passed through sepsis and is no longer the living blood that is in the veins and arteries.

Insulin is not just a multi-octave catalyst; the brain commands the pancreas to produce exactly the insulin that is currently needed. In addition, the low-octave portion of insulin is “rolled” into a protein container and delivered to the living cell, where it is necessary for “unloading” the delivered potentials. **Therefore, insulin must correspond exactly to not just the genotype, but the brain must be able to control all the frequency potentials of this catalyst, otherwise the result of container delivery will not be determined.**

The potentials of gravitational frequencies and magnetic impulses that are not controlled by the brain are "atomic bombs" that transmute a living cell in a direction that is not provided for by the development and mutation program. At the first stage, the cell changes its midpoint, then the albedo minimization law takes effect, the color scheme at low octaves is green, which corresponds to an excess of the norm of potentials, and SOS signals are generated for the brain.

The brain begins to change the functions of the delivery pathways, changing the frequency potentials of the kidneys, pancreas, etc. **There is a self-oscillating (not controlled) process, which is usually called either diabetes mellitus or hemophilia.**

## **7. Artificial catalysts.**

Under conditions of self-oscillating process, an attempt is made to stabilize this process (not to remove it, but to stabilize it) **by introducing artificial catalysts - insulin** obtained, for example, from the pancreas of pigs. When attacks occur, this insulin is injected into the body, **creating the illusion of normalization of metabolic processes.** In addition, as the condition worsens, it begins to be administered regularly.

## **8. Consequences of using artificial catalysts.**



**An artificial catalyst is a structure that has no direct connection to the brain.**

In addition, the insulin obtained in this way has only low-octave components that have passed sepsis (destruction of direct connections). But even low-octave components partially correspond to the meaning of getting a container, **so their presence brings temporary relief**. In this case, the cell receives a "rattling" mixture of unknown or unwanted high-octave potentials in the "pork lining".

**But the albedo of the "pig skin" is always positive, and the superposition of the albedo leads to a change in the position of the midpoint. Each new portion of artificial insulin shortens the life of the cell. The brain cannot interfere with this process, since the lack of control does not allow anything to be done.**

The presence of artificial insulin in the body violates first of all, of course, the albedo of the brain itself, which generates signals in the information field about the violation of albedo, **and the SYSTEM has the right to start eliminating such a brain** that is not able to cope with its problems.

To summarize, it is necessary to conclude that the sooner, in the state of the beginning of the "application" of insulin, the SvetL Programs will be connected, which will allow to abandon this "traditional cure", the more chances there are to bring the state of the Brain and the whole organism to the "initial state" before the onset of a problem associated with the development of diabetes.

For representatives of the well-known genotype of the Brain, prevailing today in medicine, leading pharmaceutical companies and not only.

Since artificial insulin is obtained from pork, then kosher meat, as an active dietary supplement, must be pork, and in the ratio: 88% lard and 12% meat. Kosher pork is best purchased in Belarus - it does not contain genetically modified additives (unlike Ukrainian and Polish). Before eating, the pig must be bathed in the Jordan River to cleanse the tapeworms in its intestines. Pigs must not be over 22 years old.

---

[1] A. Khatybov "Diogenes' Barrel"