

## 1.12. Current "problems" of the Information Field of the Neutrino Space and the role of SvetL programs in these processes

Author: Shkrudnev F.D.



### **Introduction.**

During the formation of life support systems, it was assumed that the information field of neutrino space will not change during its operation, since it is not subject to external changes, in particular, from proton structures (due to their lack of organization). In response to attempts to eliminate the information field of neutrino space (in the future, IFNS), a complex of life support systems will always work, designed to restore the IFNS.

However, in recent years, there has been a process of destroying the IFNS, changing its structure, informative significance, and inadequate feedback. This can be observed, without looking up from TV screens, from the statements and activities of not only our "leaders" (the so-called political and other elite), but also the "leaders" of other "leading and developed countries in the world", as well as all those who are called "influential" politicians, businessmen, top managers, etc.



Let's look at some of the reasons for this phenomenon and try to answer questions about the problems of restoring the IPNP, at least in the framework that was 1372 years ago.

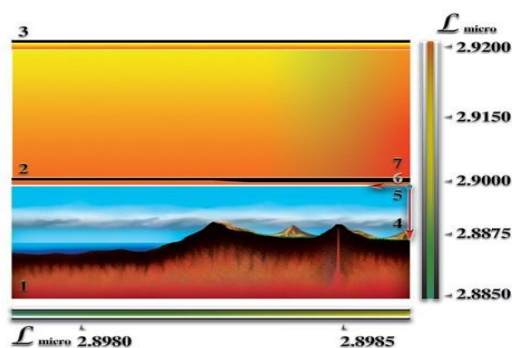


### **1. Purpose of the information field of the neutrino space.**

Any space body, on which it is supposed to deploy active biological life, must satisfy many conditions, in particular, albedo, mass, motion conditions and many others.

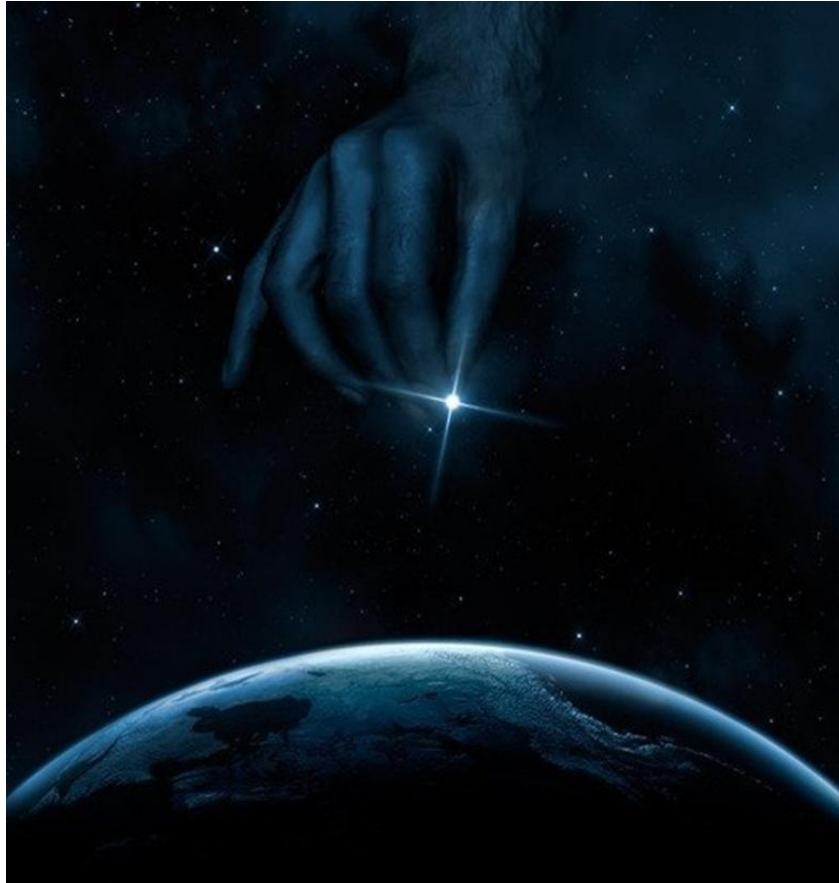
To ensure all conditions, given that there are no ideal space bodies, **life support systems are being created, designed not only for their own protection, ensuring the existence of biostructures, but also supporting the autonomous environment** in which life exists and develops.

Life support systems are located on the selected planet so that they can optimally use all the advantages of the planet (according to the conditions) and neutralize the disadvantages as much as possible. Given that life support systems are autonomous systems for converting energy received from the main source - the Sun and Space, the work of these systems depends not only on the development of life itself, but also on the development process itself, that is, **life support systems properly form the processes of knowledge that are transmitted to biologically active structures for execution.**



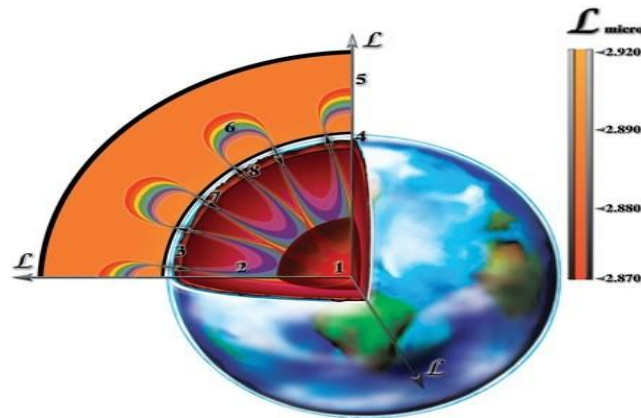
**It is known from the symmetry that a weak signal has the maximum information power, so the neutrino field, or neutrino space, was initially chosen to form the information field.**

This was taken into account by N. Levashov when creating the so-called "Dark Matter Generator", which is the main component of all the created "SvetL Programs"[1].



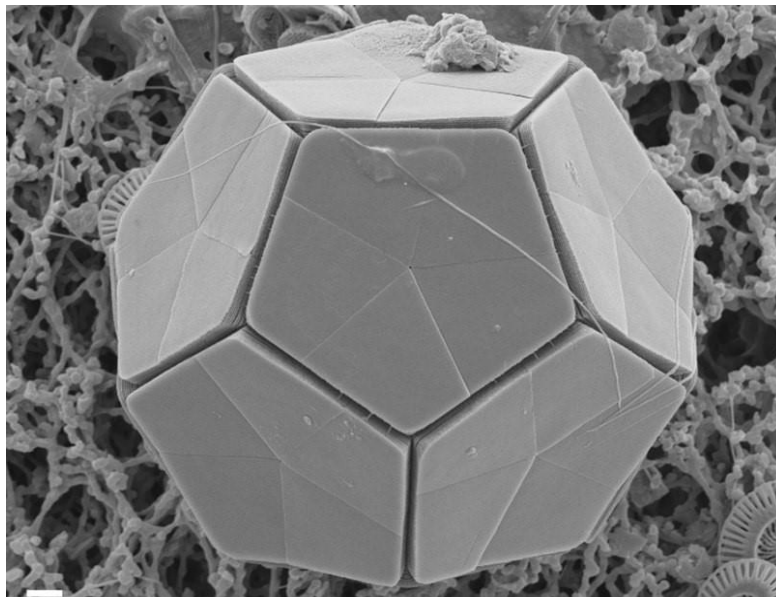
## 2. Types of informational fields.

**There can only be two types of information fields** - strong and weak (the names are conditional). A strong information field includes proton fields constructed in proton space on the basis of a binding proton atom with a sufficiently dense charge equivalent and the ability to independently and without the participation of life support systems to form their own charge equivalents. These fields, as a rule, have a small radius of action (no more than a few hundred kilometers), but a large informative capacity, due to the property of the proton atom itself. The field is formed in the form of a lens and when the critical value of the charge equivalent is reached, it “links” with any energetically active space for exchanging charges, which translates the proton information field into the category of vampire fields.



**The proton field cannot be eliminated after it gains a critical mass, since then it would be necessary to eliminate not only the Sun, but also the Cosmos as sources of a positive charge equivalent.**

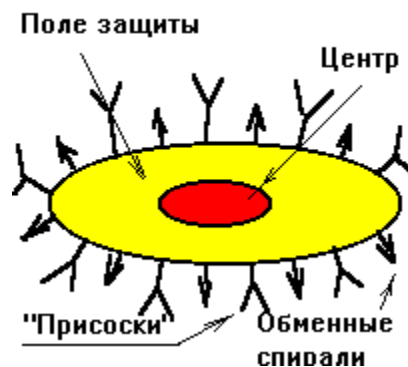
In the process of forming a critical charge equivalent, it is impossible to penetrate into the center of a proton atom to change the function of constructing a field, since the charge equivalent of the proton atom itself is compatible with the limiting charge equivalent of the Solar system itself, and if the life support system is imperfect, a spontaneous accumulation of charge occurs with an information density sufficient for alignment of the planet's albedo even by destroying it.



The dodecahedral structure of the proton atom allows you to link any control systems and use them at your discretion, in particular, systems built on the basis of piezomagnets. This is applied in the "**SvetL Programs**", and in particular, when they work to "improve the ability to receive" information flows by the Brain of the Owner of the SvetL Complex. Note once again that **the information field of proton space (hereinafter IFPS) cannot be created by the life support system itself, since this field eliminates the life support system in a short time. We can say that the brain does not specifically create cancer cells.**

The weak information field is the information field of the neutrino space (IFNS). Imagine a child's balloon divided into sections on the inside. From the ball in all directions diverge "spokes", that is, communication channels, and these spokes rest against a closed external hollow ball from the inside. For the Earth, the thickness of the outer sphere is approximately 22 km, and it is represented as a web of threads connected so that any change in conditions in this environment becomes known and there is enough time to eliminate negative consequences.

**The conditional breakdown of the information field of the proton.**



Поле защиты/Protection field – Центр/Center - "Присоски"/"Suction cups" - Обменные спирали/Exchange speed

In the center, the space of information support is formed; the protection field is a phased charge, "suction cups" - coupling with any energetically active field, exchange spirals - capture, screening, calibration of exchange charges (one-way information exchange with any energetically active field). Why do I need calibration?

The meaning of the existence of any information field in proton space includes the property not to intersect with a field of the same type, that is, the number of such fields may be unlimited, but they have the same program - the restoration of the albedo of a cosmic body.



Центр/Central - Внешний контур/External contour – Защита/Protection – Связь/Communication

**The information field of the neutrino space, in the cross section, resembles a wheel.** The center is divided into 12 sections; the protection (or surface of the inner sphere) ensures the inviolability of information from external influences.

The outer contour is a “web” that tightly surrounds the cosmic body and communication is via the channels of communication with the center both for the center's information about changes in the external environment, and for ensuring the process of intellectual development of biostructures.

It should be noted that the “needles” that rest against the protection circuit do not have energy capacity, so as not to destroy the protection and not to eliminate the center itself. Therefore, the neutrino space is chosen from all types of spaces (as the weakest in charge density).

However, there are some drawbacks in the construction of IFNS, for example, if you remove the "needles" on the one hand, the information density increases on the other (the external surface remains unchanged). This can lead to the liquidation of the center (explosion of the center), therefore, to prevent this, it is necessary to reduce the density of the outer surface, which ultimately can lead to its elimination, that is, the meaning of the existence of the IFNS itself.



It can be added that information about the structure of the IFNS was known for a long time, but the only thing that was done with this information (due to the imperfection of feedback at that time) was to create a wheel as the basis of technological progress. However, you can't get far on one wheel, it can only be used in a circus, and the height of the seat is determined only by the quality of the wheel and the skill of the rider.

Then there is a reasonable question - whether there can be a rider and what should be the support. All this today applies to the so-called "modern science" and the individuals who represent it. Especially when individuals are not able to understand (and most likely they are simply not given) such things.

### **3. Reference surface of the information field.**

Consider the process of linking IFPSs with IFNS. This is an extremely important issue that affects the formation of the reference surface. There may be several such surfaces, since IFPS's do not intersect with each other. Any IFPS is formed in places with sufficient IFNS for the exchange process. What is the peculiarity of this exchange process? The density of IFPS's increases towards the center, but the elimination of the shell does not affect the center, since it self-regenerates due to the influx of positive charges from Space and due to the selected octaves of magnetic pulses from the Sun.

The rate of charge collection depends on the quality of the life support system. Earlier it was stated that the imperfection of life support systems, in particular, inconsistent hours of operation, accumulated over many centuries of this work, the negative role of the moon as a factor of accumulation, albedo, inadequate response biostructures in an attempt to alter the course of rivers, and more contribute to the formation of IFPS. But IFPS's cannot exist on their own - they need not only the conditions of existence that are provided by the imperfection of the life support system, but also the meaning.





The energy flow for the space body must be consistent with the external environment, and therefore the change in albedo as a factor of instability of the space body also determines the program automatically generated in the IFPS - removal of the cause of albedo mismatch. There is no function of special destruction of the IFNS - there is only an albedo alignment program, and if this is prevented by the IFNS, then this field is destroyed by annihilation. As IFNS and IFPS use for their work the same frequency of the magnetic pulses (the Sun), then there is no problem in the coupling process. Further, exchange potentials simply lead primarily to the elimination of control structures built on the basis of, for example, piezomagnets, and on the basis of biostructures. However, such destruction leads to a change in the density of the IFNS at the location of the IFPS, while either a redistribution of density occurs. It is about the same as if the information flows associated with the production of integrated circuits would not go to the centers of intellectual development, but to the Islands of Polynesia, whose inhabitants, having received information about these circuits, would add a bamboo handle to them out of habit, so that it would be easier to fish and hammer nails.

This already resembles the load on the wheel when performing in a circus. The appearance of such a load is fixed by gravitational frequencies and passes into the category of external control, that is, there is a direct possibility of control from the Gravitational Reference Point of the System"[2]. With this management, the very meaning of the IFNSs existence is lost, since when the properties of the "wheel" change, it is either patched or thrown away. Patching is the addition of "stones" (IFPSs) under the wheels. But there is another mode - the decrease of the density of IFNS, and then information flows are not redistributed with any IFPSs, meeting the reduced density IFNS may not get a critical charge density, and then by mark at IFPS just to eliminate it. Thus, the elimination of the support surface does not lead to the external influence of the Gravitational benchmark, and within a certain time it is possible to rebuild the life support system, coordinating it with the conditions of existence of a space body, first of all, with the condition that the albedo is not violated.

In this case, the IFPS is taken, as usual, for an external object that violates the structure of the IFNS, and is destroyed. Even if the density of IFNS is reduced by more than 99 %, this will not lead to the destruction of the center, but will only help to detect and destroy all IFPS's in the first place.

Note that the transmission of information exchange and information anomaly - IA (not to be confused with the donkey's cry) in a dense charge medium has led to incompatible from the point of view of the meaning of the existence of biostructures of specific physical units of measurement. Not knowing the actual values of these quantities leads to incidents such as cloning a living cell, mutation of biostructures, etc. But this is a change in the feedback function, which automatically leads to the appearance of IFPSs. Where did this come from?

It is because of the incorrect translation of information flows - the meaning of the field is transformed into a wheel, and the energy value - into a horse constant (1 horsepower = 746 watts).

Thus, all physical quantities were indirectly translated into standards via horsepower. However, the IFPS does not use horsepower, but is built on the constants of the Solar System, which complicates the fight against it, since changing the properties of environmental control systems does not allow you to respond to these changes in time.

Therefore, it is an important task to form a normal worldview and link it primarily to control systems. What actually contributes to the "**SvetL Complex**" relative to the owner of the Complex. Let's look at some issues related to the information support of biostructures and the "help" of SvetL Programs in these important processes.

#### 4. Use of information flows.



In ancient times, when it was necessary to build a house, the inhabitant of the Earth consistently led various animals to the place of the proposed construction, and their behavior determined whether something should be built on this place or not. But the animals not only wagged their tails - they transmitted a huge amount of information. Man, without a translator, could not identify sounds and what animals transmitted through the antiproton space, or as they now say, at the level of the subconscious.

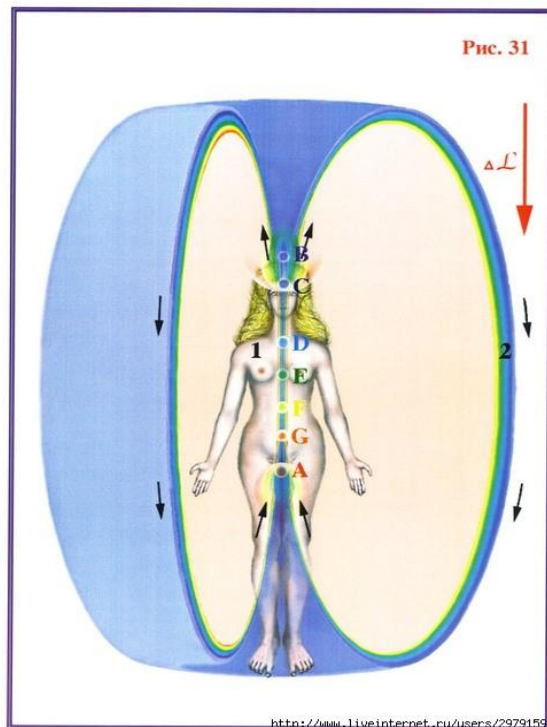
This is primarily due to the neglect of those who, from the point of view of a person, are a step below his development, and secondly - **the difference in the grids of biostructures - all animals at the base of the lymph have a dodecahedral structure, and information exchange with a person is only possible if at least part of the brain has the same structure.**

Here it should be noted that **the basis of the "Dark Matter Generator" is precisely the dodecahedral "structure", which through the torus, as a transitional "mechanism", is able to gradually transform the current Brain structure (basically, cubic) into its native, dodecahedral structure, which is extremely important and necessary today.**

The progress of mankind, today, has been expressed in the creation of mass media - television, radio, print media in terms of information exchange, but no more. To achieve harmony with nature, **a Person today needs to transform the Brain structure into a normal dodecahedral structure, which will not only perform its functions, but also have reliable information from biostructural sensors.**



And in this case, the SvetL Complex today is extremely needed by the majority of people who, considered as unnecessary, were nearly “sentenced to destruction” by the Old Management System, which was following the failed implementation of the 2012 plan"[3]



The woman who came closest to communicating with animals was the one who corrected her actions, even in raising children, after exchanging information with animals. It is noticed that animals treat a woman better than a man, considering him a drone, and a woman - the basis of the genus and a wet nurse.

Women have a different structure not only for logic, but also for information exchange. (This explains the division of the "SvetL complex" and its programs into "Women's" and "Men's").

**When a woman says “NO” to a man's claims, it does not mean that she refuses him, but only: “Find a Natural Translator”, that is, the active points of the lymph nodes on her body. At the same time, “YES” should alert - “Early Amnesty”.**

Women's logic, unlike men's, is built on contradictions, but this does not mean that they have a small vocabulary. As practice shows, all women of the same genotype have the same vocabulary; the only question is how it is used. As an example, we can cite the vocabulary of a certain individual who announced himself at well-known (in narrow circles) conferences held by a pronounced genotype with a lost "connection with the information System) "able to turn off and turn on "Generators". This vocabulary, as soon as the individual breaks away from reading the text written for it, is no more than (counted by listeners) 23 words of the so-called "camp jargon".

It is known that the smaller the vocabulary of a woman (which is externally perceived by a man), the more successfully she marries (this does not apply to an individual).

Let's take for example the vocabulary (about 30 words) of Ellochka from Ilf and Petrov's “12 chairs”. These are not words - they are commands, for example:

HO – chiral person;

HO - Hartman, move away (Hartman-the name of a man as a magnetic anomaly);

HO - want to rest, etc.

These commands were pronounced, as described, in various keys, and accordingly, the command was followed in another space by detailed information sufficient to detail any processes. **The smaller the external vocabulary, the more highly organized the information exchange** (and this does not apply to the above-mentioned individual). The man, on the contrary, - with a large external vocabulary, there is no double meaning, that is, he is forced to tell all the details aloud, which tires the listener. The speed of information exchange in different spaces is different and what a woman can transmit within 1 second, a man spends at least a day (about 128 sheets of text). When transmitting information from life support systems, some men can hear music (usually this time is from 3:30 to 4:30 local time), but they cannot decrypt it and during the day they try (those who have a musical education) to restore what they heard, that is, to broadcast it. All great composers are men.



But this music is intended for women, and they get it already in a distorted form at concerts. On the other hand, all honored psychics are women. They do not need to explain anything to the man, because the man simply follows their commands, not understanding why this is happening (**and creates scientific institutions to study these phenomena**).

As a man usually does not understand the commands of a woman, she, knowing the gravitational basis of the brain in men[4], brings to his consciousness the meaning of his expressions with the help of inertial mass, for example, an iron or a rolling pin (the heavier, the clearer) ...

It is noticed that when the external vocabulary increases, the woman accelerates speech, that is, she tries to transmit commands faster in order to match them with the actual text, and the man, on the contrary, slows down speech. Without a command structure, everything you need is selected from the vocabulary, and this takes more time.

**WARNING** - If you notice some interjections in the vocabulary of the Yumba-Nyumba tribe, drop everything and run away from them, otherwise you risk becoming completely dependent on their will. Since you don't know their actual vocabulary, you don't know what they can make of you - a barbecue, a pack animal, or something else.

The command language as the basis of communication is best developed by the Germans, so they were invited to rule.

## 5. Bio-sensors.

**What are bio-sensors? These are biostructures that inform both the external environment and, through the outer shell of the life support system, the system itself about the changes that are taking place.** What changes can the external environment undergo in the conditions of its protection by the life support system?



These are holographic changes, that is, changes in optical transformations of space, this is the appearance of magnetic anomalies (Hartman), electrical anomalies (Curie), gravitational anomalies (X-rays), distortion of resonant feedback loops, changes in the properties of a resonant amplifier (reducer), violation of the gas environment, or the ratio of the partial pressures of gases and much more. Each such distortion can lead to mutation of biostructures, therefore, in case of any violation, an immediate response follows.

In addition, the reference clock cycle time for data exchange is monitored. This is not a complete list of biosensor functions.

**To perform their functions, bio-sensors must have a dodecahedral structure of control elements, a resonance, or an increase in the charge equivalent in which it automatically causes an alarm**, that is, the corresponding signal is sent. If a dog barks at you, it means that your magnetic field exceeds the norm at this moment and distorts the external environment.



If a flock of geese suddenly starts to wail and rushes at you, it means that you have violated the gas environment, so you cannot eat anything that can disrupt the environment at the moment when you, for example, graze geese. By the way, the expression "geese saved Rome" came from ancient times, it means that those who tried to capture Rome, did not eaten something right before the attack, but the bio-sensors worked on it, and the defenders of Rome, apparently, noticed that they were eating attackers and used geese as bio-sensors, not dogs or cats.

The expression "dog is a friend of man" is well known. The fact that the dog reproduces the command of the life support system very accurately and tries to inform the person about it (after decrypting the text) does not mean that the person understands it.



Осторожно!/Caution!

Во Дворе злая собака!/There is a dog in the yard!

Порода не крупная, но вооружена до зубов!/The breed is not large, but armed to the teeth!

Usually he gets a scalpel into the dog's ionic structure of the brain and tries to find analogs of his brain there. **(But it has already been established that the owner of the SvetL Complex does not allow such "flaws", even for scientific purposes)**. Due to its imperfection, a person cannot independently decipher the text that the dog transmits to him at the subconscious level, having previously given the command. She can even brush off a clocked section of text to make it clearer, but this is perceived only as a good attitude of the dog to the person.

#### **6. Danger of entrainment by proton structures.**

As noted earlier, an IFPS is formed into an autonomous object when a certain critical non-inertial mass is reached. This is the state when an IFPS can independently reproduce a program that aims to restore the Earth's albedo. Of course, to create a critical mass requires significant costs, but these costs of the life support system itself, or rather, its imbalance. At the same time, IFPS's, having formed into an independent structure, can use those formations that are used by the life support system, in particular, control systems.

This allowed them, until recently; to use the control system itself for their own needs, adjusting it at their discretion. For example, the mass media - television, radio, and print - are still being used to train killer robots.

**The new imputed Native program of life support systems See aims to eliminate unnecessary genotypes and build a Native society in the future that is completely subordinate to the current life support system.**



However, in this case, the external environment must also correspond to the program being executed, and the functions of monitoring the external environment are assigned to the biosensors, the reaction of which no one tries to decrypt.

This is one of the main dangers. IFPSs, having one type of atomic structure (by connection), can simply change the initial ratio of potentials in control systems and subordinate this control to them, while changing the external structure of the IFNS and creating an Information Anomaly. The general norm (Information-Holographic Basis of Geostructural Exchange) of the field decreases and increases the dependence on IFPSs. This decrease in the field leads to an increase in "morons", that is, those who are influenced by the media. They can already be attributed to the rulers, and their reaction to what is happening only strengthens this process, for example, prostitution, drug addiction, homosexuality, lesbianism, etc., are now rapidly growing, while all this is heavily advertised by the media, which once again confirms the conclusion that all the management of these funds is influenced by IFPSs. In this regard, the owners of SvetL Complexes are guaranteed to be protected from such effects. But here you need to understand that the "passive behavior of the owner, relative to the ongoing processes" around him, may not give the expected results in the development of the Brain. N. Levashov has repeatedly said and written about this in his works.

#### **Application.**

Table of the most used commands.

**IA** Information Anomaly (failure of communication threads)

**IHB-GE** Information - Holographic Basis of Geostructural Exchange (rule)

**GA** Gas Attack (changing the gas environment)

**HAR** Holographic Autonomous Release (optics change by smell)

**ARR** how to Activate a Resonant Reducer (changing the charge of the medium)

**Curie's EQ** grows clearly (excess of electric potential)

**Hartman's EQ** -rhesus julit (formation of a reverse spiral of a magnetic pulse)

**MU Music Heard** (reception of musical commands of life support systems)

**AFNCI** Autonomous Field, Numerical Characteristic of Information (the only command available to a person)

This table can be continued, but it is given as an example, and a complete table can be compiled by conducting large-scale studies, which is what the above genotype is doing today with the individual mentioned as an example of using a small number of words.

If the biostructure does not allow it to be used as a receiver-transmitter, it is not needed and can be eliminated.

By the way, the most beloved name for a cat is **MURKA** (Small Amplifier of Resonant Circuit Autonomous). It is possible that the cat itself asked to be called that.



Cows have a constant connection with the information field - they constantly chew, that is, they form a background for receiving information. The same role is played by chewing gum - the Americans just decided to catch up with cows in intelligence.

---

[1] See N. Levashov "the Source of Life" 1-10

[2] See A. Khatybov "Fundamentals of celestial mechanics"

[3] See "Fundamentals Of the formation of Humanity" part 1-4

[4] See A. Khatybov "Newton's Apple"

[5] See "Fundamentals Of the formation of Humanity" part 1-4