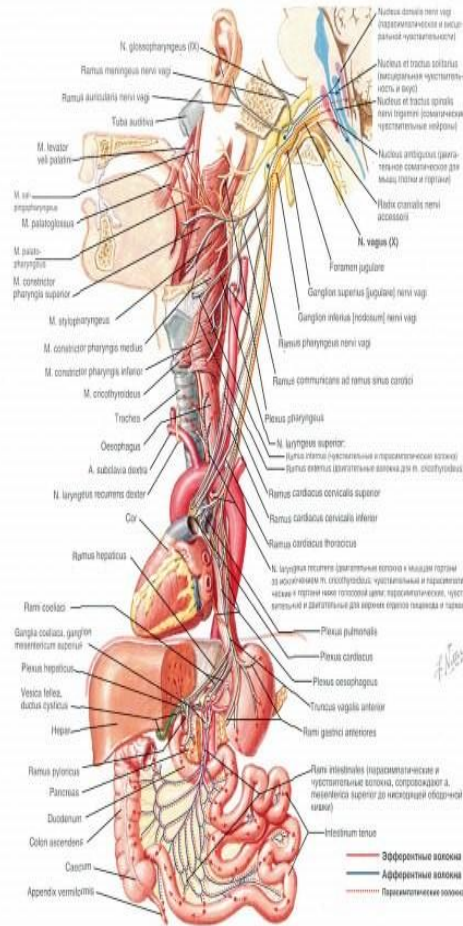


## 1.15. Cancer as a form of cell existence and the "SvetL" complex as prevention (correction) of this condition

Author: F.D. Shkrudnev

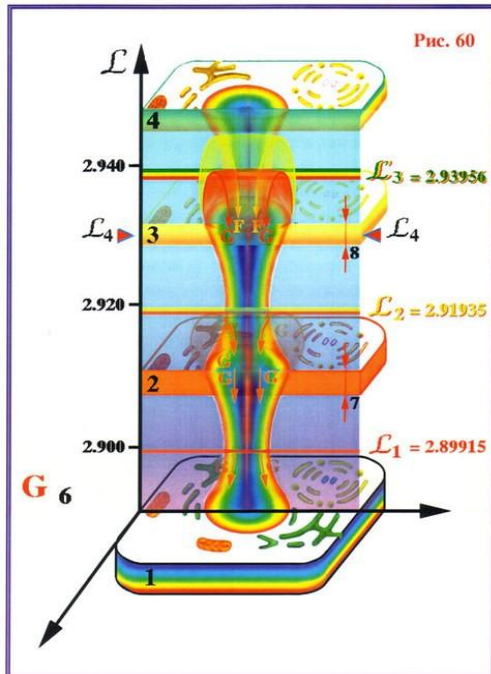
**Cancer is a state of a cell in conditions of lack of communication with the Brain.**



**The brain, as the highest state of charge equivalent structures, while relying on lower organizations (biostructures) has a certain corridor of direct control over a living cell biostructure.**

According to **the laws of connection of spaces** (see N.V. Levashov's Essence and Mind and A.M. Khatybov's Fundamentals of Celestial Mechanics), **the magnetic impulse generated by the brain, and received back by it as confirmation** (and determining the charge dimension in the neutron space), **has a strictly consistent organization for each living cell.** The magnetic impulse is generated by the brain from a basic series of k-structure octaves: **96, 72, 68, 66, 64, 62, 54, 48, 32, 28, 24, 21, 16.**

Octaves 66, 68, 72 define the genotype and the brain works with only one value of the three.



In addition, each value of this pulse can be decomposed into a 64 \*64 matrix, which determines the entire set of its values. The pulse must have a certain potential, and if this potential is below a certain standard value (see the reference book), the brain quantizes the charge by the equivalent of temperature, then by the angle of slip, and if there is no confirmation, the cell is perceived as dead, it does not exist for the brain.

The temperature quantization limit (step 0.20 C) is up to 43.60 C, and the sliding angle is 21.50.

**Any biostructures should be subordinated under normal conditions to this particular mode of brain function.**

However, a living cell (biostructure) is organized in the neutron space, and the difference in space imposes a number of restrictions on the normal operation of a living cell.

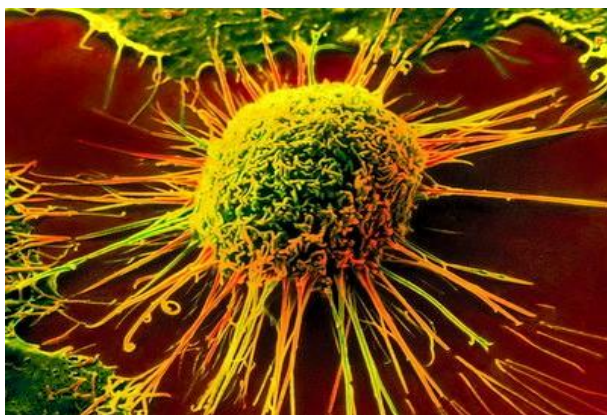
The concept of neutron space was introduced to refer to immaterial structures, or non-inertial mass. In science, this state is designated as the "soul" (by N. V. Levashov – in his writings – as the Essence). But the light cloud that rises after death is also a material mass.

### 1. The influence of the external environment.

Changes in the albedo, for example, atmospheric phenomena - rain, snow, wind, drought, **entail unforeseen distortions of the electric potentials of gravitational frequencies and the potentials of magnetic pulses**, causing involuntary changes in the temperature of the cell and the sliding angle.

External stimuli - radiation, the action of chemical stimuli, the background influence of the form (for example, the place of residence) lead to a rearrangement of frequencies and, as a result, **a distortion of the electrical potentials of a living cell. There are limits to the existence of both gravitational potentials and electrical potentials. When you go beyond these limits, the information exchange is distorted.** The "SvetL" Complex, "tuned" to its owner and interacting with his Brain at the level of neutron space, always equalizes (balances) these unforeseen or negative states and distortions.

As a rule, these distortions lead to the appearance of a different type of cell and the convolution of the code embedded in each cell. The genetic code is transformed into any other structure that can exist in conditions of stable external influence. **This is not a bacterium that uses the electrical potentials of a living cell on its own, like a parasite, but the cell itself.** However, given the difference in the standard of the magnetic pulse in different spaces, a living cell has a wider range of its existence, without strictly agreeing on the time and space of the albedo. This means that the Brain is forced to adapt to a new structure within its standard. To prevent the avalanche-like formation of "foreign" cells, the Brain forms an **integral corridor - 50,000 cells per solar day**, according to the albedo of the Brain, must be removed from the area of control of the Brain. That is, if 10,000 such structures are formed, they are normally removed from the brain's communication area and are **not subject to processing** and control by a magnetic pulse, **unless these cells have passed into another form of existence** - bacterial, or autonomous. When the cells are withdrawn from the control area, everything is removed from them, and they are removed (they will no longer be in the body).



On the other hand, the number of new cells with an altered albedo can exceed 50,000, and then the **Brain** performs an elimination - less **"harmful"** cells remain and receive a temporary connection with the brain by a magnetic pulse, and the rest "turned off".

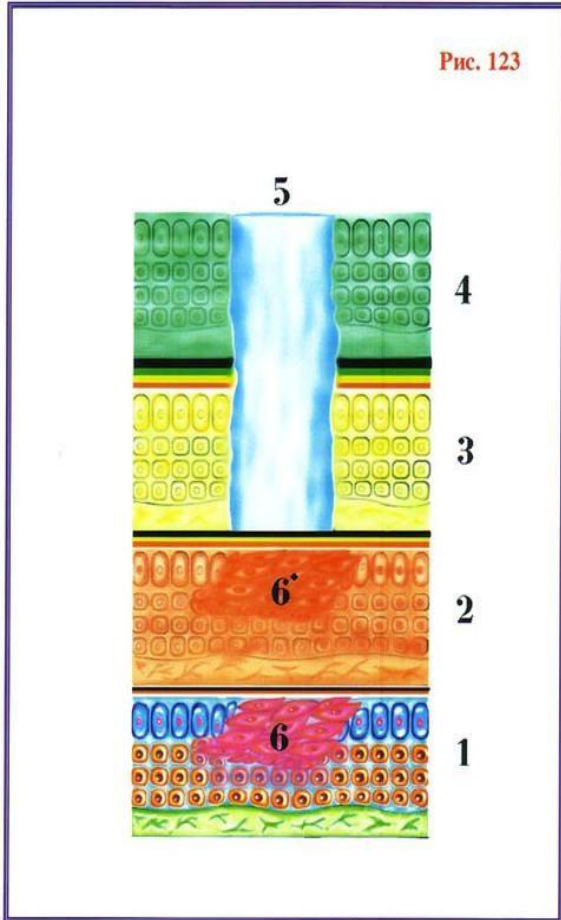
However, this is where the "**Trojan horse**" is located - the cells left behind narrow the range of ejection, closing the channels through which these cells can be destroyed. Reducing the index from **50,000 to 45** leads to an unlimited growth of "temporarily bound cells", which are called "CANCER".

The SvetL Complex, with constant "scanning" of the entire human body (at the cellular level) and also, in interaction with the Brain, "removes" all the negative aspects, so that the Brain can independently cope with the above task. This is the "prevention" of the appearance of "cancerous formations". The process of "**destruction**" of **already formed** (for one reason or another) cancer cells and, accordingly, their mass colonies (so-called Cancer tumors), by the SvetL Complex (its Programs) will be described in detail in other works of the series of articles "Knowledge from Na\_Chala).

The brain is forced to rearrange the potentials and charge equivalents under new structures, which in themselves can form a "test" of the brain itself.

## **2. Internal factors.**

The altered structure of a living cell forms an additional, intermediate environment for the existence of a colony of new cells that are resistant to external influences. This internal environment has the ability to change the charge equivalent of a living cell due to the "kirlian" radiation, both in the direction of **increasing** it, provoking the brain to reduce the electrical potential, and in the direction of **decreasing** it, giving out information about additional "feeding" of a living cell.



This fuel is used by the new colony for its own life support. All drugs, the effect of which is based on the suppression of the electrical potential of colonies of foreign cells, provoke the brain to increase the electrical potential of living cells, and this potential is distributed in the colony itself. **Any impact - from chemotherapy to laser "burning" leads to an increase in potentials** for a living cell (manifested in an increase in temperature, a decrease in reaction time - **and therefore the life of the cell**). N. Levashov repeatedly wrote and spoke about this<sup>[1]</sup>.

The changed conditions of the neutron space also lead to changes in the functioning of the Brain according to the reference parameters. The right and left helical structures of the DNA of a living cell can no longer be distinguished at the limit values of the electrical potential and are perceived by the Brain as a normal living cell. But this means that each cell receives and has its own control structure. Thus, the Brain **also receives a virus**, that is, a structure that has an inverse albedo relative to the normal communication matrix.

The appearance of the virus leads to a decrease in the initial charge equivalent without changing the reference values, that is, such parameters as the sliding angle and humidity already fall in the Brain. When the known limit values are reached, **the Brain can no longer control, and will strive to get rid of any cell - living or from a colony**, but this does not correct its condition, since viruses, reducing the charge equivalent of the Brain, lead to its destruction.

In contrast to the colony, where the cells already have a single structure for removing the electric potential, living cells remain an autonomous formation in this environment and are quickly transmuted, transforming into new structures. All the above - described processes are "monitored" by the **SvetL Program (when the Complex is running)**, which "helps the Brain to do the right analysis, when managing cells and prevent such situations, and in some cases, accelerate the processes associated with the "withdrawal" of already formed viruses and dead cells from the body.

Tables of colony formation frequencies - see the reference book on frequencies (A. Khatybov's monograph "Cold Nuclear Fusion"). The elimination of colonies is carried out by the method of superposition of frequencies, but the brain, having no cells that nevertheless receive a magnetic pulse, creates new cells of the same structure, according to the connection of the virus with the brain, and even if the colony of cells is destroyed, the brain creates it again, and not necessarily where it was before. This function of the brain is automatic and cannot be corrected from the proton space, that is, the environment of the material existence of the cell. This correction is **made by the "SvetL" Program**, which works only for **the owner of the Complex**. All this is well described by N. Levashov (see "The last appeal to Humanity", "On the Essence, Mind and much more" and A. Khatybov "Instructions for bathing" (Appendix 1).

In the proton (material) environment there are not and cannot be preparations affecting the immaterial environment. This was taken into account when creating the SvetL Complex and its Programs. Knowing the frequencies that created the "aura" around autonomous cells, it is also possible to develop devices for eliminating the "aura" (but this is a separate topic for consideration). Surgical operations, as a rule, are not successful, because any cell, including an autonomous one, is first of all in the neutron space, but with the knowledge of horse literacy you can't look there.

---

[1] N.Levashov "The Last Appeal to Mankind".